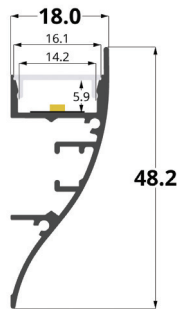


## LLP-WL01-03

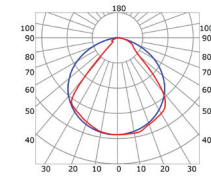
Available in 2 m for LED strip up to 14 mm width



### COVERS

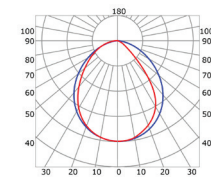


### PHOTOMETRIC CURVE



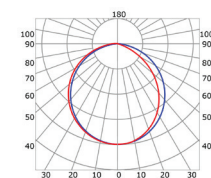
— C0-C180 — C90-C270

Transparent cover  
(light reduction: -20%)



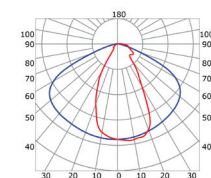
— C0-C180 — C90-C270

Semiopal cover  
(light reduction: -25%)



— C0-C180 — C90-C270

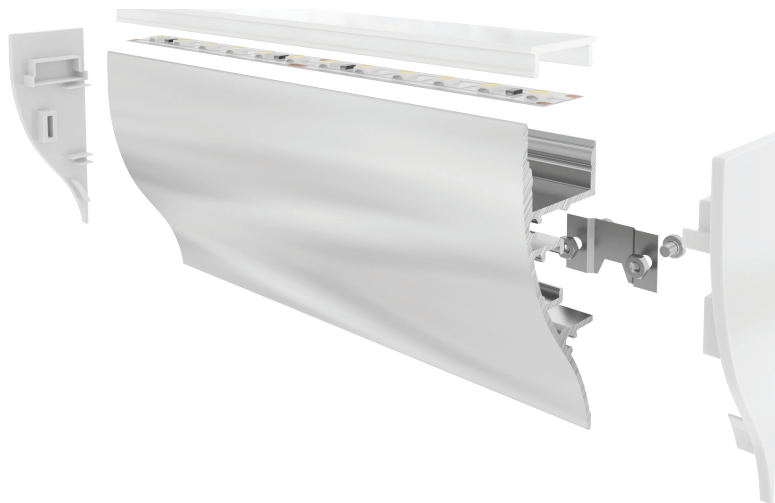
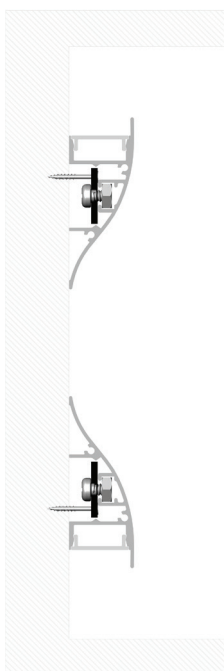
Opal cover: -37%  
Frosted cover: -43%



— C0-C180 — C90-C270

55° lens cover  
(light reduction: -19%)

### INSTALLATION



### END CAPS



A

B

### MOUNTING CLIPS



C

Article	Description	Length	Material	Color	Picture	Packaging
LLP-WL01-03-S2	Wall profile	2 m	Anodized aluminium	Silver		-
LLD-03-FK2	Transparent cover	2 m	Polycarbonate	-		320 pcs
LLD-03-FM2	Opal cover	2 m	Polycarbonate	-		320 pcs
LLD-03-FH2	Semiopal cover	2 m	Polycarbonate	-		320 pcs
LLD-03-FS2	Frosted cover	2 m	Polycarbonate	-		320 pcs
LLD-03-XK2-L2	55° lens	2 m	Polycarbonate	-		-
LLE-WL01S-GP-U	Left end cap	-	Plastic	A		-
LLE-WL01D-GP-U	Right end cap	-	Plastic	B		-
LLM-IN07-M	Mounting clip	-	Metal	C		-

